



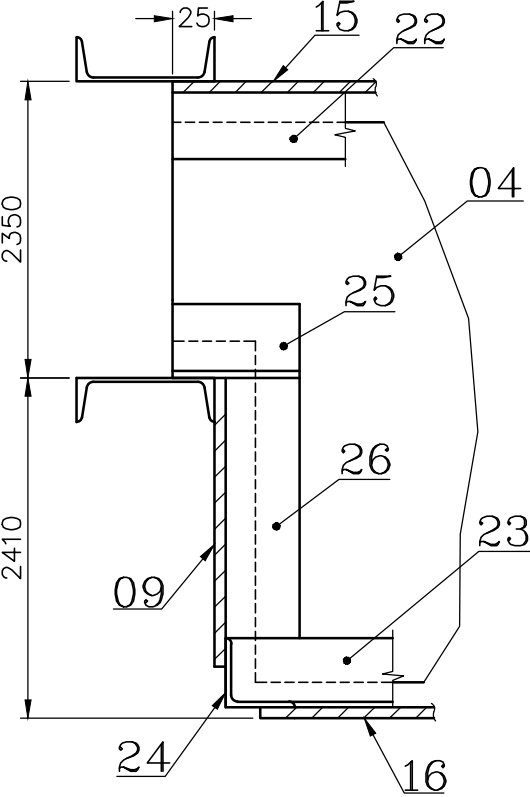
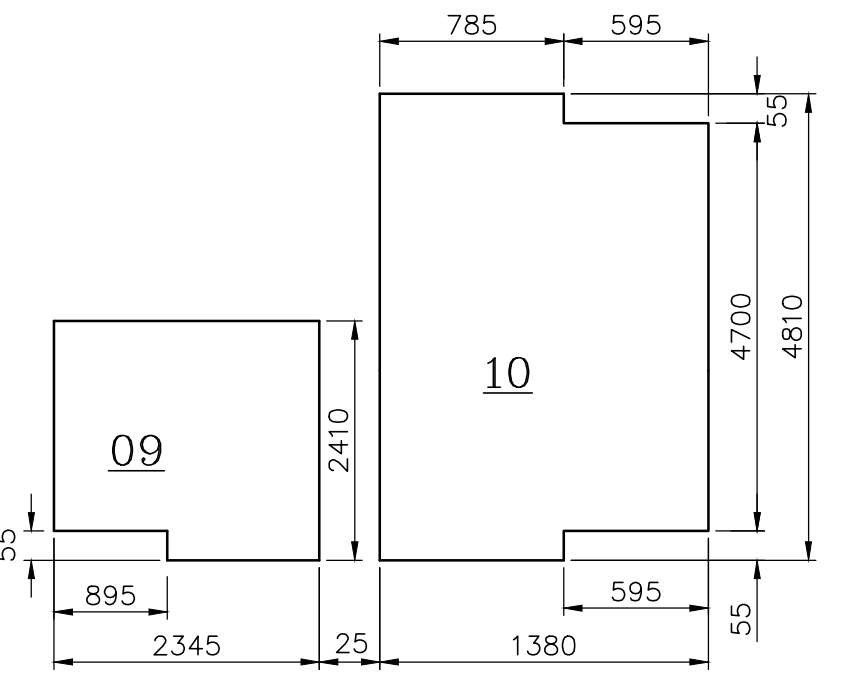
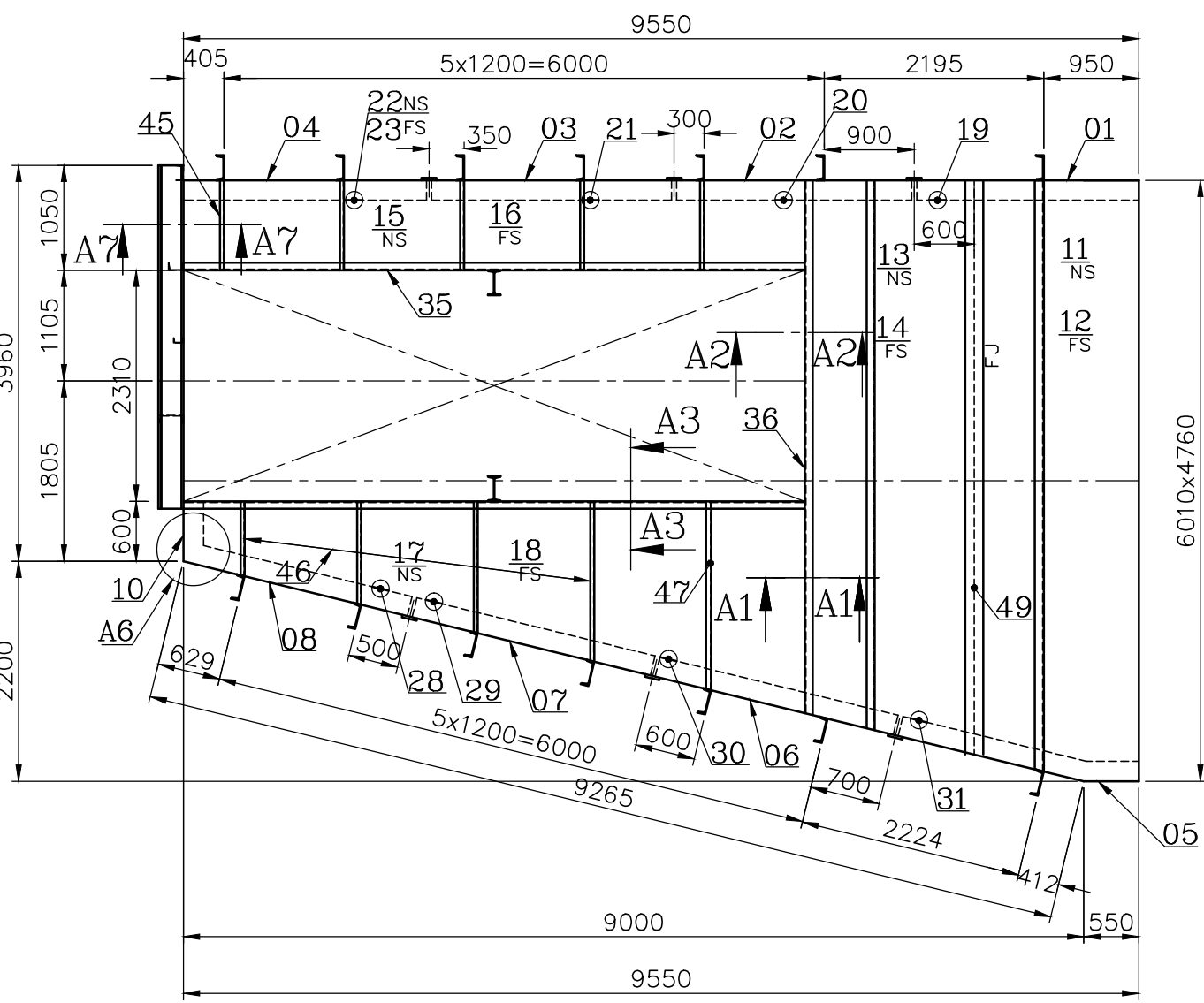
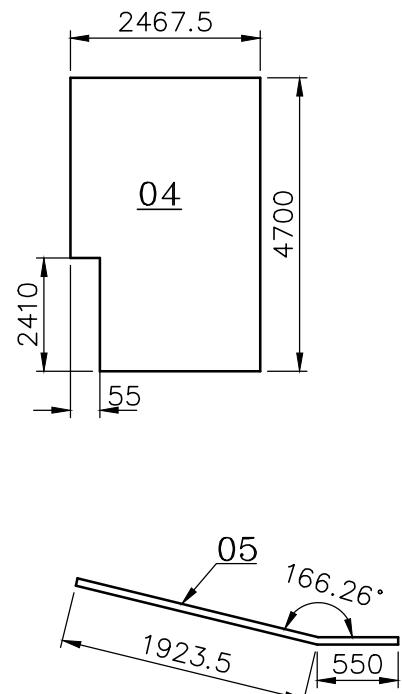
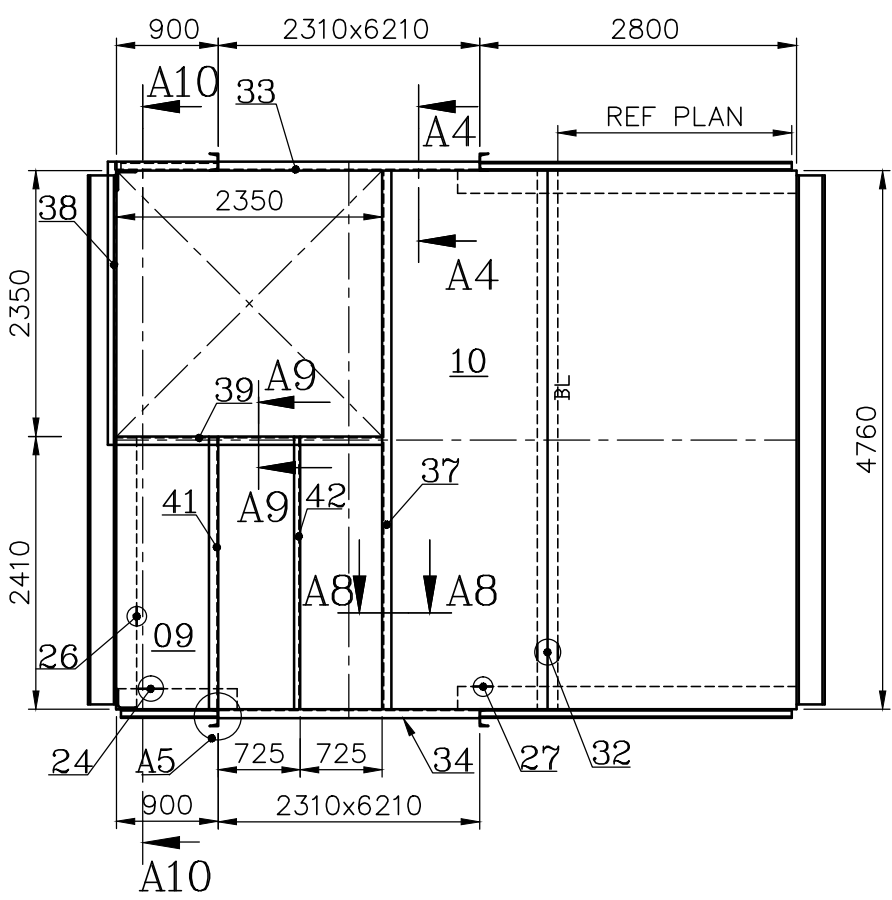
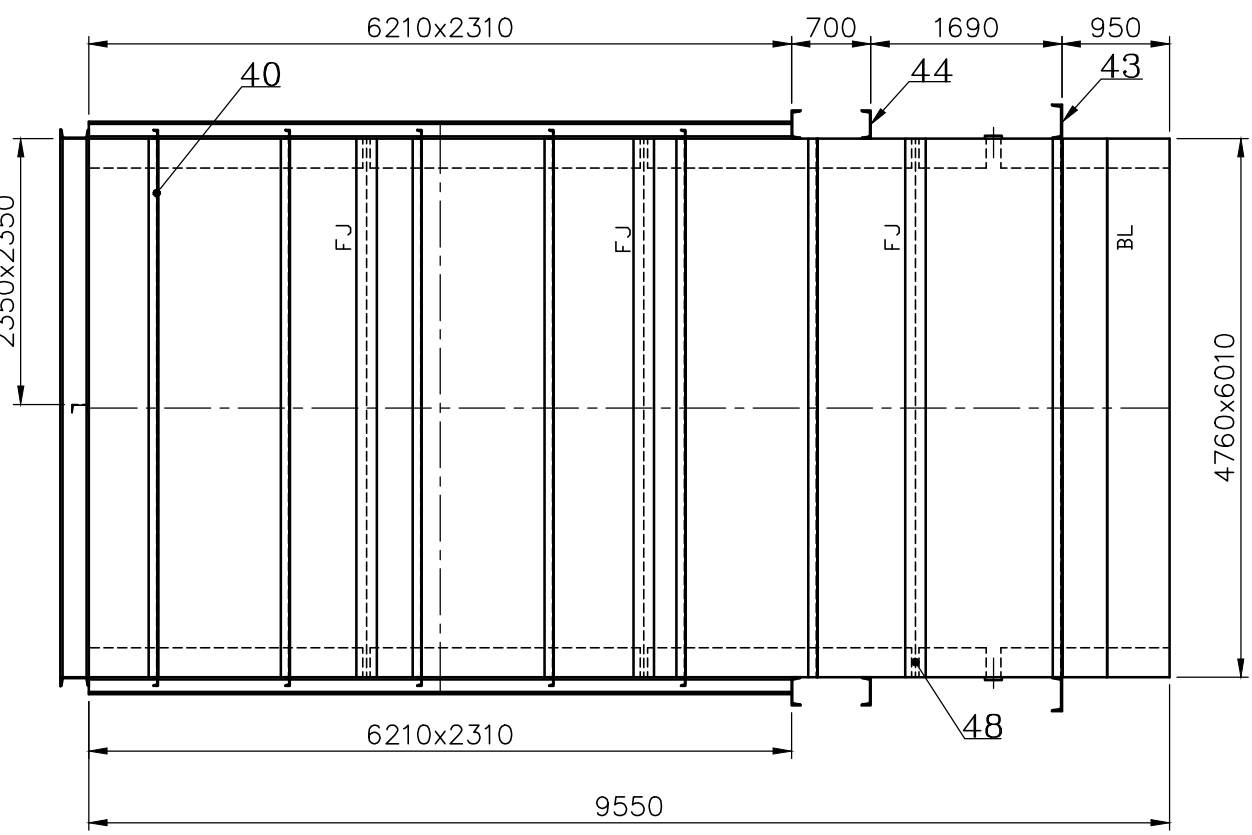
NOTE:

01. FOR GENERAL NOTES REFER PAGE NO. 41 (REF:41) OF DUCT CONSTRUCTION MANUAL.  
REF121 FOR CONSTRUCTION DETAIL.

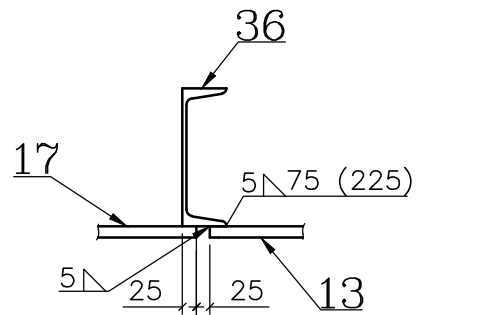
[illegible]

	35	ISMC 150 6210				150100350000		104.320		
						IS2062 E250A		4		
	34	ISMC 250 2460				150100340000		84.130		
						IS2062 E250A		1		
	33	ISMC 250 3360				150100340000		114.910		
						IS2062 E250A		1		
	32	PLATE 5 150x4600				150110290000		27.080		
						IS2062 E250A		1		
	31	ISA 75X75X6 2484.5				150130050000		16.890		
						IS2062 E250A		2		
	30	ISA 75X75X6 2497				150130050000		16.980		
						IS2062 E250A		2		
	29	ISA 75X75X6 2497				150130050000		16.980		
						IS2062 E250A		2		
	28	ISA 75X75X6 2342.5				150130050000		15.920		
						IS2062 E250A		2		
	27	ISA 75X75X6 615				150130050000		4.180		
						IS2062 E250A		2		
	26	ISA 75X75X6 2330				150130050000		15.840		
						IS2062 E250A		1		
	25	ISA 75X75X6 105				150130050000		0.710		
						IS2062 E250A		4		
	24	ISA 75X75X6 895				150130050000		6.080		
						IS2062 E250A		1		
	23	ISA 75X75X6 2448.5				150130050000		16.650		
						IS2062 E250A		1		
	22	ISA 75X75X6 2478.5				150130050000		16.850		
						IS2062 E250A		1		
	21	ISA 75X75X6 2447				150130050000		16.640		
						IS2062 E250A		2		
	20	ISA 75X75X6 2397				150130050000		16.300		
						IS2062 E250A		2		
	19	ISA 75X75X6 2243.5				150130050000		15.250		
						IS2062 E250A		2		
	18	PLATE 5 2068x6205				150110290000		318.980		
						IS2062 E250A		1		
	17	PLATE 5 2068x6205				150110290000		318.980		
						IS2062 E250A		1		
	16	PLATE 5 845x6205				150110290000		205.790		
						IS2062 E250A		1		
	15	PLATE 5 845x6260				150110290000		207.620		
						IS2062 E250A		1		
	14	PLATE 5 1632.5x5678				150110290000		351.050		
						IS2062 E250A		1		
	13	PLATE 5 1632.5x5678				150110290000		351.050		
						IS2062 E250A		1		
	12	PLATE 5 1632.5x5950				150110290000		375.580		
						IS2062 E250A		1		
	11	PLATE 5 1632.5x5950				150110290000		375.580		
						IS2062 E250A		1		
	10	PLATE 5 1380x4810				150110290000		257.960		
						IS2062 E250A		1		
	09	PLATE 5 2345x2410				150110290000		221.810		
						IS2062 E250A		1		
	08	PLATE 5 4700x2286.5				150110290000		421.800		
						IS2062 E250A		1		
	07	PLATE 5 4700x2475				150110290000		456.570		
						IS2062 E250A		1		
	06	PLATE 5 4700x2475				150110290000		456.570		
						IS2062 E250A		1		
	05	PLATE 5 4700x2473.5				150110290000		456.290		
						IS2062 E250A		1		
	04	PLATE 5 4700x2467.5				150110290000		449.680		
						IS2062 E250A		1		
	03	PLATE 5 4700x2425				150110290000		447.350		
						IS2062 E250A		1		
	02	PLATE 5 4700x2375				150110290000		438.120		
						IS2062 E250A		1		
	01	PLATE 5 4700x2232.5				150110290000		411.840		
						IS2062 E250A		1		
VARIANT NUMBER	ITEM NUMBER	DESCRIPTION	STD	DRAWING NUMBER	ITEM NO	MATERIAL CODE	A/C/P	UNIT	UNIT WEIGHT	QTY
					VAR NO	MATERIAL SPECN		DI	QUANTITY	

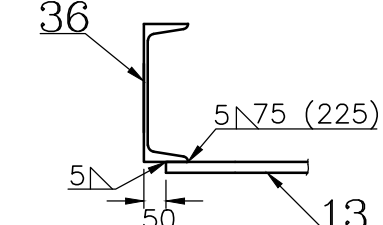
CAUTION: The information on this document is the property of BHARAT HEAVY ELECTRICALS LTD. It must not be copied, reproduced or in any way detrimental to the interest of the company.	TYPE OF PRODUCT OR NAME OF CUSTOMER/PROJECT				Bharat Heavy Electricals Ltd UNIT: HIGH PRESSURE BOILER PLANT TIRUCHIRAPALLI - 620014		DRN EOL/KUMAR/K/P	NAME RAMANA	SIGNATURE	DATE 04—11—14
					CHD SHANNUGAM				DATE 04—11—14	
	355—053				APPD				DATE 04—11—14	
	DEPT DU	ALL DIMENSIONS ARE IN MM	PROJECTION 	SCALE N.T.S.	WEIGHT (Kg) 11520.510	REF TO ASSY / OLD DWG				
	CODE 124									
TITLE  T DUCT					DRAWING NO : 1—48—202—42835					



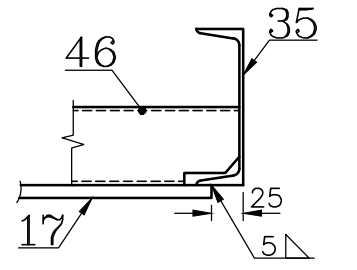
SECTION—A10—A10



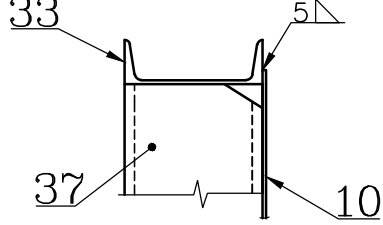
SECTION—A1—A1



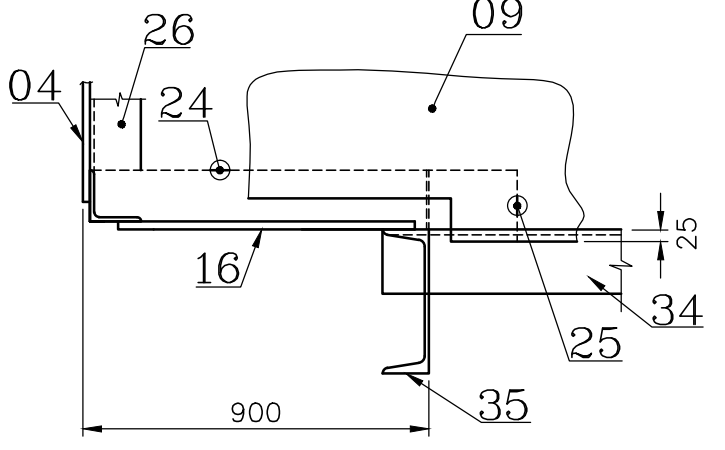
SECTION-A2-A2



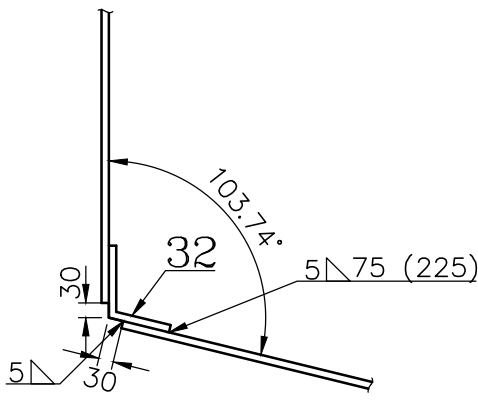
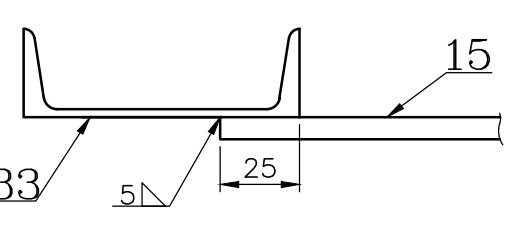
SECTION-A3-A3



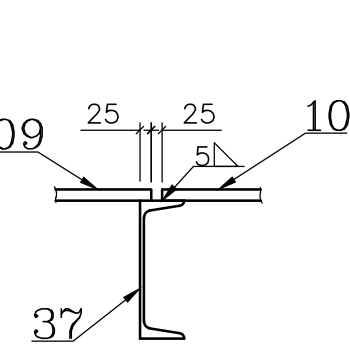
SECTION-A4-A4



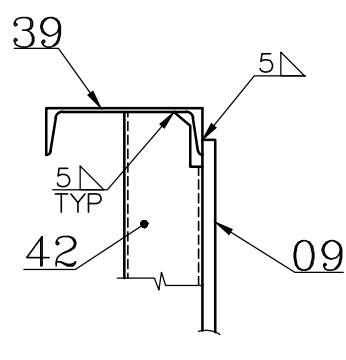
DETAIL-A5

DETAIL—A6

SECTION-A7-A7



SECTION-A8-A8



SECTION-A9-A9

49	PLATE 5 C.T.S. 125x5750			150110290000	28.210		
				IS2062 E250A	2		
48	PLATE 5 125x4700			150110290000	23.050		
				IS2062 E250A	6		
47	ISMC 100 1841			150100030000	17.600		
				IS2062 E250A	2		
46	ISMC 75 C.T.S 4700			150100360000	33.550		
				IS2062 E250A	2		
45	ISMC 75 852			150100360000	6.080		
				IS2062 E250A	10		
44	ISMC 250 5415			150100340000	185.190		
				IS2062 E250A	2		
43	ISMC 300 5828			150100060000	211.550		
				IS2062 E250A	2		
42	ISMC 100 2410			150100030000	23.040		
				IS2062 E250A	1		
41	ISMC 150 C.T.S. 2410			150100350000	40.480		
				IS2062 E250A	1		
40	ISMC 250 4676			150100340000	159.910		
				IS2062 E250A	14		
39	ISMC 150 2350			150100350000	39.480		
				IS2062 E250A	1		
38	ISMC 150 2505			150100350000	42.080		
				IS2062 E250A	1		
37	ISMC 250 4760			150100340000	162.790		
				IS2062 E250A	1		
36	ISMC 250 5264			150100340000	180.020		
				IS2062 E250A	2		

REV	DATE	ALTERED :
01		CHD & APPD :

T DUCT

DRAWING NO :  
1-48-202-42835